



Hotel Royal / Eurothermenresort

Bad Ischl / Upper Austria

****S hotel located in the heart of the Salzkammergut

- ✓ FEEL GOOD IN THE HEART OF THE SALZKAMMERGUT
- ✓ IMPERIAL PLEASURE WITH TRADITION
- ✓ WELLNESS AT THE HIGHEST LEVEL



Nearby

- + DIRECTLY IN THE IMPERIAL CITY BAD ISCHL
- + EUROTHERMENRESORT BAD ISCHL
- + SKI AREA DACHSTEIN WEST - GOSAU / RUSSBACH / ANNABERG



Information about the region

Bad Ischl: 468m above sea level, 14 100 inhabitants, imperial villa; town museum, Lehár Villa, guided tours of the town, brine baths at the Salzkammergut Therme; St. Wolfgang approx. 17km, World Heritage region Hallstatt-Dachstein approx. 22km, Salzburg approx. 55km.

Information about the accommodation

Location: Located in the heart of the Salzkammergut in the picturesque Bad Ischl, the Hotel Royal ****S offers the perfect setting for an unforgettable stay. Luxurious living is guaranteed here - stylishly furnished rooms and suites allow the magic of Bad Ischl to be felt throughout the resort. Unique views of the Salzkammergut and the majestic mountains guarantee an unforgettable atmosphere. The train station is 200m away.

Facilities: The health and relaxation hotel of the Eurothermen Resort Bad Ischl offers 130 rooms and 12 luxury suites. Tastefully furnished hotel lobby with reception, various restaurant options, hotel bar, elevator, panoramic walkway to the Salzkammergut Therme. A free parking lot is available, alternatively public parking garage is included in the price.

Wellness: The panoramic corridor provides easy access to the Salzkammergut thermal spa, the Relaxium sauna world and the Royal Oasis with a relaxation area reserved exclusively for hotel guests. Admission is included in the room price for the whole day from the day of arrival to the day of departure. Swim or relax in the brine pool (approx. 34°C) with approx. 3% salt content or in the brine whirlpool or float from one attraction to the next in the Lazy River, Austria's first and only outdoor thermal river landscape. The unique Relaxium sauna world with various saunas, brine grotto, brine pool and a spacious sauna garden with mine sauna invites you to relax. Experience complete relaxation with a variety of massages and numerous facial and body treatments. High-quality products are used. In the oriental wellness oasis Alhambra with Sabbia Med, Rasul, steam bath and Hamam, you will be whisked away to the world of sultans and sheikhs with Arabian colors and oriental music.

SKY LOUNGE: a relaxation and sauna area exclusively accessible to hotel guests with exclusive relaxation rooms, infrared cabin, sauna and an outdoor pool overlooking the Bad Ischl mountains.

Health: The Physikarium health and therapy center focuses on active health care and a wide range of



therapies, particularly in the area of the respiratory tract and musculoskeletal system. The natural remedies salt, brine, sulphur and brine mud play an important role here. Health massages such as Tuina and Breuss massages, lymphatic drainage and drinking cures with natural Glauber's salt complete the wide range of treatments on offer.

Room categories: All rooms are equipped with shower or bath, underfloor heating, WC, hairdryer, towel dryer, flat screen TV, radio, telephone, safe, couch and minibar. 1 extra bed is available in each category, except for the Sisi, Royal and Kaiser Franz Josef suites. In the double rooms de luxe and the Panorama Suites 2 extra beds are possible.

Economy double room: 23m² of living space (incl. balcony) guarantee an enjoyable stay. View over Bad Ischl and the surrounding area.

Double room Economy Superior: beautifully furnished, with 23m² living space (incl. balcony). View of the park/pool and the majestic mountains.

Classic double room: 33m² incl. balcony with views over Ischl and the surrounding area. The rooms are equipped with double beds.

Double room Superior: 33m² incl. south-facing balcony with a view over the charming surroundings of Bad Ischl.

Double room de Luxe Classic: 38m² incl. balcony, the pink bathroom offers an exclusive wellness shower with seating area. Wellness shower with seating, separate WC. View over Bad Ischl and the surrounding area.

Double room de Luxe Superior: 38m² incl. balcony, the bathroom offers an exclusive wellness shower with seating, separate WC. View of the park/pool and the impressive mountains of the Salzkammergut.

Double room premium birch, alpine or Swiss stone pine: 28m² + 5m² balcony, themed rooms in birch, alpine or Swiss stone pine style, bath or shower/WC, view of the park/pool and the majestic mountains.

Birch, Alpine or Swiss stone pine suite: 45m² + 2x 5m² balcony, themed suites in birch, Alpine or Swiss stone pine style with generous living space, separate living room and bedroom, shower / WC. Fantastic view over the park/pool, the surrounding mountains and Bad Ischl.

Sisi Suite and Royal Suite: The highest quality furnishings on 74m² plus roof terrace balcony (21 or 27m²) in an imperial ambience make a stay in these suites an unforgettable experience. Crystal chandeliers adorn the ceilings with entrance hall, living area (with double bed on request), bedroom with four-poster bed (Sisi Suite) or double bed (Royal Suite). Luxurious bathroom with double whirlpool and infrared cabin, separate shower and WC, 2 large flat screen TVs with Dolby Surround. Special features: The Royal Suite is decorated in beige tones and has a corner roof terrace (27m²) with a fantastic view over Bad Ischl and the Salzkammergut. The luxurious Sisi Suite is decorated in light blue and white tones. The bathroom with



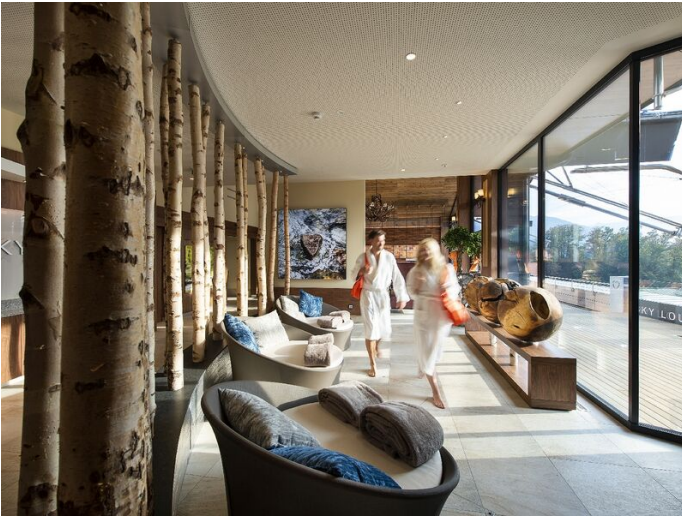
marble and gold and white tiles. The 21m² roof terrace promises breathtaking views!

Emperor Franz Josef Suite: Pure luxury on 81m² of living space plus a unique 40m² panoramic terrace with a magnificent view over the Kaiservilla and the Salzkammergut. This imperial suite lets you feel the magic of the monarchy, with all the luxury all the luxury that modern times have to offer. As you enter this baroque-style suite, the portal to the living room opens, which you enter through 2 imposing marble columns. The suite in shades of red and gold with entrance hall, living area (with double bed on request), bedroom with double bed, 2 large flat screen TVs with Dolby Surround and panoramic views leave nothing to be desired. The luxurious bathroom is equipped with a double whirlpool and separate shower and WC.

Crystal Suite Junior Suite: 46m² + 17m² balcony. Modern and elegantly furnished feel-good suite with illuminated entrance portal and luxury bathroom. The dominant colors are dark brown and light beige, as well as backlit salt stone elements.

Spoken languages: German, English.

The following payment methods are accepted: Cash, Visa, Diners, American Express and MasterCard.



Arrangement

- **Breakfast with an extensive organic selection until 12:00 noon**
- **Cake and snack buffet in the afternoon**
- **5-course gourmet organic menu of your choice**
- **Royal oasis exclusively for hotel guests, sun terrace**
- **Cozy bathrobe, bath bag with bath towels for the duration of your stay**
- **All-day access via the heated panoramic walkway to the Salzkammergut thermal spa incl. Relaxium, including on the day of arrival and departure**
- **Participation in the health and sports program**
- **Parking garage**
- **SKY LOUNGE exclusively for hotel guests**



Seasonal times

Imperial luxury time:

November 01 - November 03, 2024 & December 22, 2024 - January 06, 2025

Feel-good time:

November 03 - December 15, 2024; January 06 - March 02, 2025 & April 04 - April 14, 2025

Treatment time:

December 15 - December 22, 2024 & March 02 - April 04, 2025

The prices of the Sisi + Royal Suite and Kaiser-Franz-Josef-Suite are PER SUITE AND NIGHT; max. 4 PAX.

Arrival day and minimum stay

	Imperial time	Feel -good time	Treatment - time	over new year's eve
Minimum stay	2 Nights	1 Night	1 Night	7 Nights
Arrival day	Daily	Daily	Daily	Daily

Extra beds and surcharges

Extra beds:

- 0 - 2,9 years: free
- 3 - 5,9 years: 36,00 €
- 6 - 9,9 years: 46,00 €
- 10 - 14,9 years: 66,50 €
- 15 - 17,9 years: 87,00 €
- from 18 years: 107,50 €

Surcharges:

Double room as single room: 41,00 € (not valid in Alpine, Swiss stone pine, birch suite or crystal suite)

Salzkammergut Touristik GmbH

NATURREISEN

A-4820 Bad Ischl, Götzstraße 12, Austria

T +43 (0) 6132 / 24 000 - 77

M operation@salzkammergut.co.at



Suite as single room: 61,50 € (applies in Alpine, Stone Pine, Birch Suite or Crystal Suite)



Extras to pay on spot:

Local tax: 3,50 € per person / day (from 15 years)

Pets: 20,00 € per pet / day

Check in: from 3 pm

Check out: until 12 noon

The standard terms and conditions of the Salzkammergut Touristik GmbH **apply in the current version.**

Rates and operating hours / timetables are subject to change

Our recommendations: Get a travel cancellation insurance.

Informations



For environmental reasons, we recommend arriving and departing by public transport (train/bus). We are happy to help you organise your train journey within Austria. Talk to us!