



Salzalpensteig II

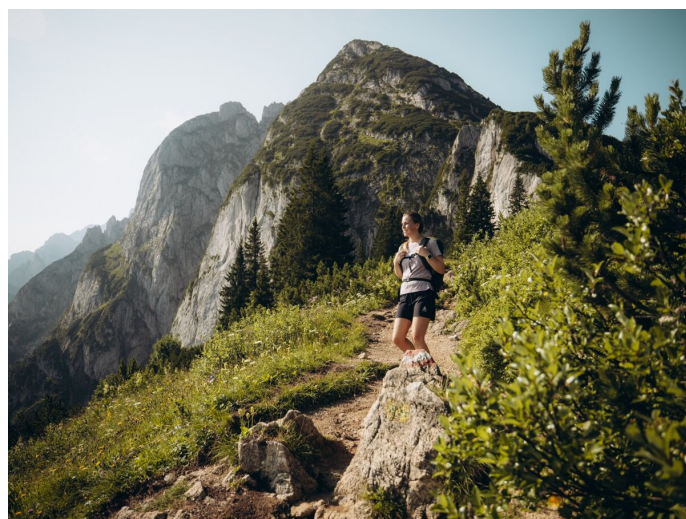
from Hallein to Hallstatt

7 nights / 8 days in the footsteps of thousands of years of
salt mining

- ✓ **WITH LUGGAGE TRANSFER**
- ✓ **OVERNIGHT STAYS IN ***HOTELS/INNS, 1X OVERNIGHT STAY AT A HUT**
- ✓ **DAILY ARRIVAL POSSIBLE**



© www.salzalpensteig.com



© www.salzalpensteig.com

*"When there are mountains, I know I can go up there
to get a new perspective on life from above."*

Hubert von Goisern, Austrian musician



The Salzalpensteig is a 250-kilometer cross-border hike that leads from Chiemgau across Berchtesgadener Land into the enchanting World Heritage region of Hallstatt. An entire landscape is linked to salt by name - the Salzkammergut in Austria, which is also part of this fascinating hiking tour. The history of salt, its extraction and the transport of what was once an expensive and sought-after commodity, accompanies the hikers. Salt used to be called 'white gold'; How valuable it was is made clear, for example, by the ration of salt "salarium" as part of the payment of Roman legionaries. The visitor mines, where you can experience the extraction of salt on site, are worth seeing. For centuries, salt deposits brought financial and cultural prosperity to the places in question. Look forward to a journey in front of a wonderfully diverse natural backdrop with rushing waterfalls, sparkling lakes and alpine climbs.

Highlights

- + **OVERNIGHT STAY IN THE UNESCO WORLD HERITAGE TOWN OF HALLSTATT**
- + **SELECTED LAKESIDE HIKE WITH A UNIQUE MOUNTAIN BACKDROP**
- + **HIKING AREAS RICH IN ALPINE PASTURES WITH PROMISING SNACK STOP POSSIBILITIES**
- + **VISIT TO THE HALLSTATT SALT MINE**
- + **IMMERSE YOURSELF IN CULTURE AND CUSTOMS**

The course of your hiking tour:

Day 1: Arrival in Hallein

Individual arrival to Hallein, the district capital in the beautiful Tennengau located between the city of Salzburg and the Dachstein massif. It's worth visiting the salt factory, the only show saltworks in Austria, where you can look over the shoulder of a pan master at work. The Celtic Museum is also worth seeing, because it was the Celts who first promoted salt mining in the Iron Age here.

At your accommodation you will receive the travel documents at the hotel (1 night in Hallein).



Day 2: Panoramic Truckenthannalm and romantic Veil Falls

From Bad Dürrnberg to Golling you immerse yourself in an area that is attractive in terms of landscape, natural history and geology. On this stage you hike in the tongue basin of the former Salzach glacier through the wonderful floodplain of the Salzach. First the path goes uphill to the highest point of the hike, the beautifully situated, rustic Truckenthannalm. With a bit of luck you can even buy a small snack there. But you should take a break on the mountain pasture in any case, which was first mentioned almost 900 years ago. Along lush meadows you pass the source, so-called 'Maximilianquelle', beneath the impressive rock faces of the Hoher Goll. After a short climb you reach the veil falls with a rest area. Finally, you reach Golling through the lush vegetation of the idyllic floodplain forests of the Salzach (1 night in Golling).

Hiking distance: approx. 5 hours (14 km, altitude difference ascent: 500 m in height / descent: 700 m in height)

Day 3: Through gorges, past waterfalls and along crystal-clear mountain lakes

The bus to Unterscheffau takes you to the starting point of today's hike (payable on spot). The hiking trail now follows upstream through a forest and meadow landscape, again and again along the Lammer, to Oberscheffau. The 41-kilometer-long river Salzach has its source in the southern Tennengebirge. After reaching Oberscheffau, you reach the Schwarzenbach and you first go through a cultural landscape and continue along the so-called Mühlenweg. The Klausgraben is rich in water. A stone pillar from the 16th century points to border disputes between Scheffau and Abtenau. The last stage leads to the Tricklfall and the no less impressive Dachserfall. Finally you reach the overnight accommodation in Abtenau (1 night in Abtenau).

Hiking distance: approx. 5-6 hours (14 km, altitude difference ascent: 559 m in height / descent: 339 m in height)



Day 4: Between rugged rocks and shady meadows in the Tennengebirge nature reserve

A fun ride on the Karkogel cable car takes hikers to the Karkogelhütte in just a few minutes. From here it is only a few minutes' walk to the small plateau with a magnificent panorama of the peaks of the Tennengebirge and the Salzkammergut mountains. On the way through flower-filled alpine meadows with a wonderful view of the small Traunstein you reach the cultivated Gsengalm. At the foot of the 1,810 meter high Schober you follow the path through an area of meadows and mountain pine trees. We go past the dilapidated Quehenbergalm downhill towards the picturesque town of Annaberg im Lammertal (1 night in Annaberg im Lammertal).

Hiking distance: approx. 4-5 hours (9 km, altitude difference ascent: 645 m in height / descent: 993 m in height)

Day 5: Over the Gosaukamm to the Gablonzer Hütte

Well rested, you start in Annaberg and follow the legendary hiking trail through dense, blueberry-covered coniferous forest up to the highest point of the Kopfberg. A figure of the local patron saint, St. Anna, carved from pine wood welcomes you and invites you to take a breather and recharge your batteries in a real place of power. Now a steep climb begins to the welcomed Stuhlmalm where you can take a break. The hut offers visitors a fantastic view of the northern escarpment of the Bischofsmütze, and the Tennengebirge.

Großglockner and the Hohe Tauern are also visible when the weather is fine. As the route continues, we hike on a high-altitude path, initially over rough roots and later over the coarse rubble of the mountain flanks, to a high-mountain beech forest. It is now only a short distance to the Gablonzer Hütte. You will be rewarded here with the impressive panorama of the Gosausee, the Hoher Dachstein and the Donnerkogel. (Luggage transport from Annaberg to Bad Goisern, where you will spend the night the following day; 1 night at the Gablonzer Hütte).

Hiking distance: approx. 7 hours (11 km, altitude difference ascent: 1,269 m in height / descent: 514 m in height)



Day 6: Inside the Salzkammergut

With the Gosaukambahn you can quickly overcome the difference in altitude into the Gosautal, which is said to have been even more remote than Hallstatt (payable locally). But if you would like to descend into the valley on foot, you can look forward to a varied hike over wooden footbridges and bridges, with small alpine huts coming into view again and again. From the cable car valley station, you take the public bus past old farmhouses to Gosau-Ramsau. Here you enter the Bible Trail and reach the Goiserer Hut at 1,592 meters via the Igmoosalm. The descent takes place via the Trockentannalm to Bad Goisern, located on the northern shore of Lake Hallstatt (1 night in Bad Goisern).

Hiking distance: approx. 7-8 hours (16,5 km, altitude difference ascent: 958 m in height / descent: 1,838 m in height)

Day 7: Hallstatt and its lake

On the way to Lake Hallstatt you cross the Traun several times. It is the lifeline of the Salzkammergut and rises in the 'Totes Gebirge' in Styria. The following section on the eastern shore of Lake Hallstatt is unobstructed, the view of the Dachstein Mountains is fantastic and the route is spectacular. The side of the Sarstein falls almost vertically into the lake and the bridges floating above the water give the impression of walking on water. We continue to Obertraun and spend the night in Hallstatt. The almost perfect ensemble of narrow streets, historic houses, lake panorama and the cultural heritage from the Hallstatt period make this place world famous. If you want to take a shortcut, you can take the ferry from Hallstatt train station to Hallstatt Markt and save yourself an eight-kilometer walk (ferry payable on spot). In the afternoon you will visit the oldest salt mine in the world. Valuable exhibits from the Bronze Age, a walk through historic tunnels and a ride on the 64-long miner's slide bring you closer to the life of the miners (1 night in Hallstatt).

Hiking distance: approx. 5 hours (19 km, altitude difference ascent: 127 m in height / descent: 102 m in height)

Day 8: Individual departure or extra nights

With its shingle-roofed houses, picturesque half-timbered and pastel facades, church towers and market square, Hallstatt nestles perfectly in the scenery between mountains and lake. For those who can take more time to discover Hallstatt, we are happy to reserve additional overnight stays.



© www.salzalpensteig.com

REQUIREMENTS AND GENERAL INFORMATION

During the tour on the Salzalpensteig you will repeatedly find yourself in alpine terrain. Appropriate mountain equipment and endurance are therefore a prerequisite. The necessary equipment includes: mountain boots, functional clothing, backpack, water and food, rain and sun protection, cell phone, and possibly hiking poles.



Arrangement

- 7x** overnight stay with breakfast buffet (6x in ***hotels/inns and 1x hut – communal bunks, hut sleeping bag* required)
- 1x** Welcome video with explanations and information you need for this tour
- 1x** Salzalpensteig hiking guide including map and further information material (1 x per room)
- 1x** bus trip Hallein – Bad Dürrenberg
- 1x** ascent with the Karkogelbahn or transfer to Karalm
- 1x** bus trip Gosausee – Gosau/Ramsau
- 1x** entry and tour of the Hallstatt salt mine
- 5x** luggage transport - max. 2 pcs./person and max. 25kg/piece
- +** Daily service hotline from 08.00 am - 06.00 pm (also on weekends)
- +** A Tree for your booking – we plant a tree for your booking

Rates per person and arrangement in €:

	17.05. – 01.07.25 01.09. – 10.10.25	01.07. – 01.09.25
***Inns per person in double room /hut with breakfast	819,00	839,00
extra charge half board / per week (min. 2 course dinner)	260,00	260,00
surcharge single room / per week	190,00	190,00
Additional charge if only 1 person travels	62,00	62,00
Surcharge return transfer Hallstatt – Hallein up to 4 people	237,00	237,00
each additional person	48,00	48,00
arrival	daily	daily

The local tax, also known as visitor's tax, is payable locally to the landlord; the amount depends on the resort and is between 1,00€ and 4,00€ per person per night. Children up to the age of 15 are usually exempt.

Notes on staying at an Alpine lodge:



- *Hut sleeping bag: blankets are available in the huts; necessary but mandatory is only a lightweight cotton/silk sleeping bag liner
- Due to their location, not all huts can offer running water, hot water or showers. In some cases there is also no flushing system in the toilets.
- On most huts, card payment is not possible. Take enough cash with you for food and drinks.

Become a sponsor of Austrian mountain rescue and enjoy the comprehensive rescue protection:
www.bergrettung-ooe.at/en/foerderer-werden

The standard terms and conditions of the Salzkammergut Touristik GmbH apply in the current version.

Rates and operating hours / timetables are subject to change

Our recommendations: Get a travel cancellation insurance.

Informations



For environmental reasons, we recommend arriving and departing by public transport (train/bus). We are happy to help you organise your train journey within Austria. Talk to us!

The **UNESCO World Heritage List** currently lists 1,154 natural and cultural sites from 167 countries worldwide. The excellent cultural and natural monuments have an extraordinary universal value that must be preserved in the long term. Austria is represented with 10 World Heritage Sites.



Level of difficulty

Daily stages with up to 900 metres of ascent - Ø 4-10 hours walking time - medium to difficult terrain: Trails with major obstacles.